

3RD WEEKEND
IN EPIPHANY

Saturday
January 22, 2022

Sunday
January 23, 2022



Bethesda Lutheran Church
GATHER...GROW...GO



A congregation of the Southeastern Iowa Synod,
Evangelical Lutheran Church in America (ELCA)



A Reconciling in Christ (RIC) congregation
for inclusivity and respect

Welcome

Welcome to Bethesda Lutheran Church where all people are respected and valued. We invite you to join our community, which is committed to inclusion, racial equity and anti-racism. We share in God's abundant grace knowing that we cannot be separated from the love of God by our age, race, ethnicity, gender identity, gender expression, sexual orientation, marital status, political beliefs, socioeconomic status, physical or mental abilities or faith background. Learn more about our inclusivity at www.reconcilingworks.com/ric. If you don't already have a church home and would like to join ours, please call the office at 515-232-6256 and we'll connect you to one of the Pastors, and make it easy.

OUR MISSION

GATHER all people into a living relationship with Jesus Christ
 GROW as disciples by worship, prayer and study of God's Word
 GO into the world to share the gospel in word and deed

WORSHIP SCHEDULE

MODERN . . . 5:30 pm on Saturdays . . . Livestream & In-person

TRADITIONAL . . . 9:30 am on Sundays . . . Livestream & In-person

Children are welcome! Age-appropriate activities during worship are available in "Busy Bags" at the main entrance to the Sanctuary.

CHILDREN'S CHURCH is available following the Children's Message during worship. Children will be escorted to Room 209 on Saturday evening, and Crossroads on Sunday morning. Parents can pick their children up at these locations following the service.

HOLY COMMUNION is available weekly to all. Bread, wine (red), and grape juice (white) served. Gluten-free wafers are available.



Hearing assistive devices are available for the sanctuary in the sound booth.

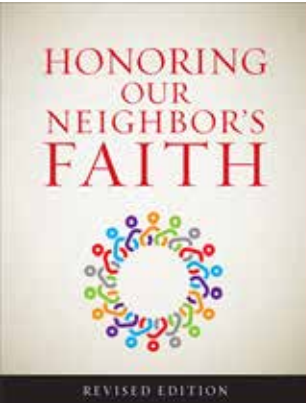
LIVESTREAM ACCESS

View our livestream worship service at www.bethesdaames.org, and click on the banner that says "Livestream - Click here 5:30pm Saturdays, and 9:30am Sundays.

Our Facebook page also hosts the Livestreams—facebook.com/BethesdaAmes/. Just "Like" our Facebook page and you will receive notification that the stream is starting.



Bethesda Opportunities



HONORING
OUR
NEIGHBOR'S
FAITH

REVISED EDITION

A 5-week series
via Zoom
Jan. 25 - Feb. 22
Tuesdays
10am or 7pm
with
Pr. Ryan & Russ Melby
Sign-up to purchase book
... \$15

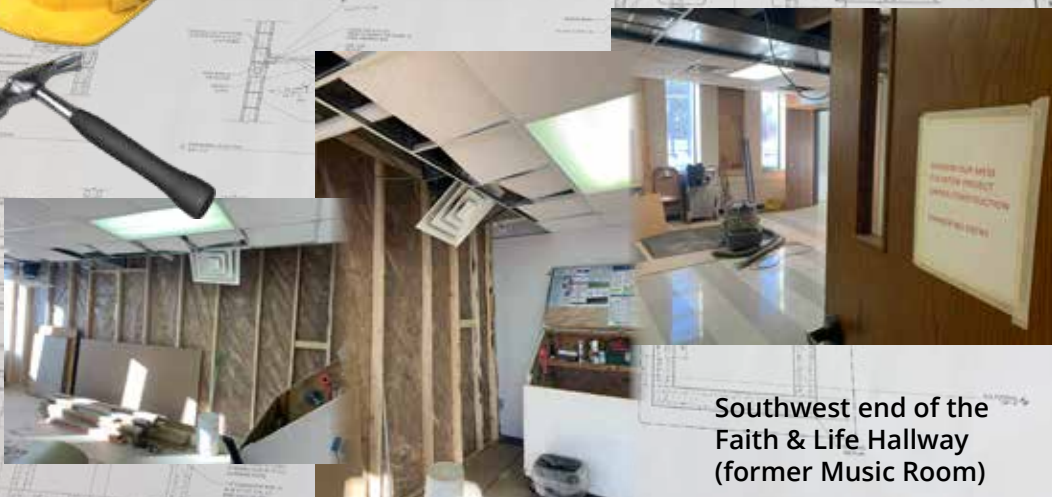
Starts THIS week!

Sign-up and make payment at
tinyurl.com/4hff369y or with
QR code at right, or to the
church office.



Join Pastor Ryan and Russ Melby for a 5-week series called ***Honoring Our Neighbors Faith***. Each week we'll learn about a different Christian denomination or world religion, and then compare it to the teachings that we, as ELCA Lutherans hold to. **The class is offered Tuesdays beginning 1/25 - 2/22 at both 10am and 7pm, EXCLUSIVELY VIA ZOOM** (we'll send out the link to those who have signed up, prior to the first session). The cost of the book is \$15, and can be picked up at the church office. Come, join us as we learn more of our neighbors locally and globally, and find ways to better connect with them.

Elevator Construction Zone Activated!



Southwest end of the
Faith & Life Hallway
(former Music Room)

Saturday, January 22

GATHERING

Gathering Music

Welcome & Announcements

Call to Worship

Gathering Song: *Our God* (band only)

Prayer of the Day

WORD

First Reading: 1 Corinthians 12:12-31a

Gospel Reading: Luke 4:14-21

Children's Message

Sermon

Song of the Day: *Mighty to Save*

Affirmation of Faith

Prayers

Peace

MEAL

Words of Institution

Lord's Prayer

Invitation to Communion *All are welcome at the Lord's table. Red is wine; white is grape juice.*

Communion Song: *Come to the Table*

Communion Blessing

Prayer

SENDING

Blessing

Sending Song: *We Will Dance*

Dismissal

Sending Music

Sunday, January 23

Page 5

GATHERING

Prelude: Praeludium in F (V. Lübeck)

Gathering Hymn: *Hail to the Lord's Anointed* (Red #311) vv. 1, 2, 4

Confession & Forgiveness

Greeting & Kyrie (Red p. 138)

Prayer of the Day

Welcome & Announcements

WORD

First Reading: 1 Corinthians 12:12-31a

Gospel Acclamation (Red p. 142)

Gospel Reading: Luke 4:14-21

Children's Message

Sermon

Hymn of the Day: *Praise the One Who Breaks the Darkness* (Red #843)

Apostles' Creed (Red p. 105)

Prayers & Peace

MEAL

Offertory: "In Thee Is Gladness" (K. Hildebrand)

Offering Prayer

Words of Institution

Lord's Prayer (Red p. 145)

Invitation to Communion *All are welcome at the Lord's table. Red is wine; white is grape juice.*

Lamb of God (Red p. 146)

Table Blessing & Prayer

SENDING

Blessing

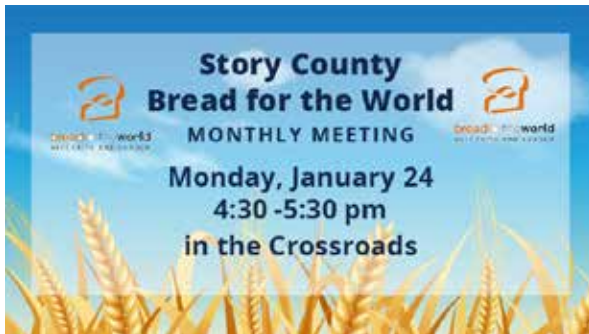
Sending Hymn: *The Spirit Sends Us forth to Serve* (Red #551)

Dismissal

Postlude: "In dir ist Freude" (J. S. Bach)



New SEIA Synod Bishop, Amy Current is requesting program and organizational input from all congregations as we plan strategies together for the Synod's Tanzania Ministry. Come and share!



PRAYER AT BETHESDA

HEALING: Bob Ahlstrom; Lucille Andersen; Cindy Deppe; Jim Duea; Sharon Forssman; Pat Frette; Harris Haar; Katie; Nora Lehti; Lynzee Makowski; Denise Meier; Mike Philpott; Sabine Troster Pierick; Cooper Schmidt; Lois Slobe

SERVING OUR NATION: Colonel Mark Kappelmann, (Senior Army Advisor to Iowa National Guard, Camp Dodge, IA), son of Glenn & Mary Kappelmann

Bethesda Opportunities



Help on the Meal Train!

Heidi Henriksen's daughter, **Lynzee Henriksen Makowski**, is gearing up for cancer treatment. A meal train (MealTrain.com simplifies the process of giving and receiving meals) has been organized for her treatment day -THURSDAYS- for the next 6 months. Contributors are welcome and needed! Visit: www.mealtrain.com/trains/q6lv7r



Let Your Light Shine Access Meeting Minutes Online

Interested in seeing minutes from Council, Board or Ministry Team meetings? Good news, they are now available online! Reach out to our Communications Manager, Lisa Ailshie at lailshie@bethesdaames.org to request access to this great new resource.

"In the same way, let your light shine before others, so that they may see your good works and give glory to your Father who is in heaven"

So many of you have asked for this easy link, and shared positive comments with us!



CONTACT INFORMATION

Tony Woodcock, Council President	woodcock.ar@gmail.com
Bryan Simmons, Lead Pastor	bsimmons@BethesdaAmes.org
Ryan Arnold, Associate Pastor	rarnold@BethesdaAmes.org
Emily Notch, Volunteer Coordinator	enotch@BethesdaAmes.org
Lindsay Peters, High School Coordinator	lpeters@BethesdaAmes.org
Mark Kretsinger-Harries, Director of Worship and Music	mkharries@BethesdaAmes.org
Julia Lundstrum, Worship Production Coordinator	jlundtrum@BethesdaAmes.org
Ed Kaizer, Saturday Night Music Leader	kaizerjazz@gmail.com
Mary Nelson, Organist	mnelson@BethesdaAmes.org
Lisa Ailshie, Communications Manager	lailshie@BethesdaAmes.org
Lynn Anderson, Administrative Specialist	ljanderson@BethesdaAmes.org
Cliff McDonald, Accounting Manager	cmcdonald@BethesdaAmes.org
Cathy Wright, Bookkeeper	cwright@BethesdaAmes.org
Linda Fevold, Database Coordinator	lfevold@BethesdaAmes.org
Curtis Malone, Assistant Custodian	

WORSHIP PARTICIPANTS

Ministers	Pastor Chris Cowan, Pastor Ryan Arnold
Saturday Host Families	Jo Hutchins, Don & Diane Pierce, Allan Schmidt
Saturday Praise Band	Ed Kaizer, Praise Band
Sunday Host Family	Gretchen Mosher
Sunday Musician	Mark Kretsinger-Harries
Sunday Communion Assistants	Stewart & Carol Melvin, Norma Sisson
Worship Production	Julia Lundstrum
Coffee Fellowship	Woodcock Family

WORSHIP

January 29/30 . . . Luke 4:21-31



Bethesda Lutheran Church
GATHER...GROW...GO



A congregation of the
Evangelical Lutheran Church in America

We are a proud member of Reconciling in Christ.
Learn more about our inclusivity at: www.reconcilingworks.org/RIC/



Office Hours
Monday–Thursday
9:00 am–4:00 pm

1517 Northwestern Ave. Ames, IA 50010
515-232-6256 **www.BethesdaAmes.org**

Worship Schedule
Saturday . . . 5:30 pm
Sunday . . . 9:30 am