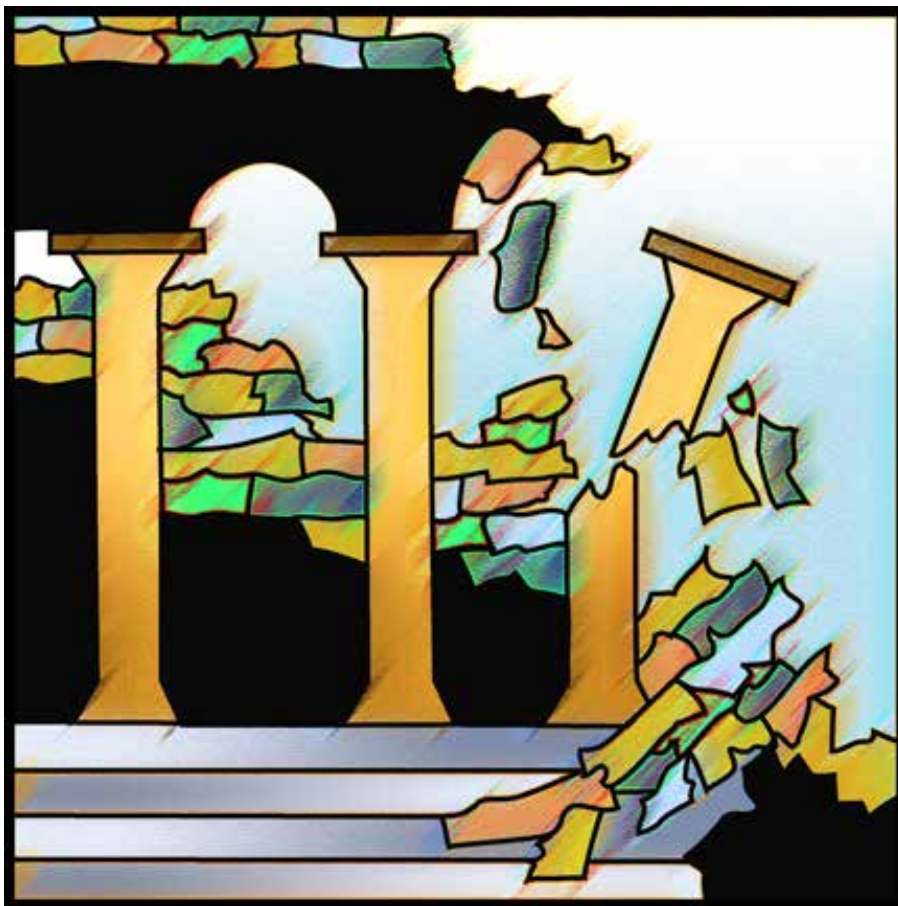


25TH WEEKEND
AFTER PENTECOST

Saturday
November 13, 2021

Sunday
November 14, 2021



Bethesda Lutheran Church

GATHER...GROW...GO



A congregation of the Southeastern Iowa Synod,
Evangelical Lutheran Church in America (ELCA)



A Reconciling in Christ (RIC) congregation
for inclusivity and respect

Welcome

Welcome to Bethesda Lutheran Church where all people are respected and valued. We invite you to join our community, which is committed to inclusion, racial equity and anti-racism. We share in God's abundant grace knowing that we cannot be separated from the love of God by our age, race, ethnicity, gender identity, gender expression, sexual orientation, marital status, political beliefs, socioeconomic status, physical or mental abilities or faith background. Learn more about our inclusivity at www.reconcilingworks.com/ric . If you don't already have a church home and would like to join ours, please call the office at 515-232-6256 and we'll connect you to one of the Pastors, and make it easy.

OUR MISSION

GATHER all people into a living relationship with Jesus Christ
GROW as disciples by worship, prayer and study of God's Word
GO into the world to share the gospel in word and deed

WORSHIP SCHEDULE

MODERN . . . 5:30 pm on Saturdays . . . Livestream & In-person
TRADITIONAL . . . 9:30 am on Sundays . . . Livestream & In-person

Children are welcome! Age-appropriate activities during worship are available in "Busy Bags" at the main entrance to the Sanctuary.

CHILDREN'S CHURCH is available following the Children's Message during worship. Children will be escorted to Room 209 on Saturday evening, and Crossroads on Sunday morning. Parents can pick their children up at these locations following the service.

HOLY COMMUNION is available weekly to all believers. Bread, wine (red), and grape juice (white) served. Gluten-free wafers are available.



Hearing assistive devices are available for the sanctuary at the sound booth.

LIVESTREAM ACCESS

View our livestream worship service at www.bethesdaames.org, and click on the banner that says "Livestream - Click here 5:30pm Saturdays, and 9:30am Sundays.

Our Facebook page also hosts the Livestreams—facebook.com/BethesdaAmes/ . Just "Like" our Facebook page and you will receive notification that the stream is starting.



Pastor Chat will feature GRATITUDE



NOURISH
Your soul & stomach

Wednesday Monthly
Supper & Worship
NOVEMBER 17
6-7:00 pm
Please SIGN-UP today!



\$10/person . . \$25/family

We NEED You to Sign-up to Plan for the Food!

Gather in the Commons for NOURISH—a monthly Meal, Fellowship and Worship!

PLEASE sign-up to help us plan the number of meals: tinyurl.com/yx2wuuzy. Mark Weber has planned a festive holiday menu:

- Baked Buffet Dinner Ham
- Sour Cream Potato Casserole (“Vegetarian”)
- Green Bean Casserole (Vegetarian”)
- Baked Fresh Sweet Potatoes with Brown Sugar
- Whole Cranberry Sauce
- Hawaiian Dinner Rolls
- Pumpkin Pie Dessert with Whipped Topping
- Beverages

Pie Socials follow worship on Nov. 20 & 21



Pie Social

Bring pie . . Share pie . . Eat pie . . Thank pie bakers

Filling

Crust

Opportunities to Serve!

Bethesda needs your talents and passion to serve in the following positions:

- *Congregational Council President-elect
- *Administration and Finance Board Chair
- *Congregational Life and Care Board members
- *Christian Service Mission and Outreach Chair and board members

For more information or to volunteer please contact any member of the Elections Ministry Team:

- Joyce O’Donnell jdodonn@icloud.com
- Larry Otteman larryaotteman@gmail.com
- Jim Stewart farm.stewart@gmail.com
- Sharon Haugen pottsie@mediacombb.net



Saturday, November 13

GATHERING

Gathering Music

Welcome

Call to Worship

Gathering Song: *One Thing Remains* (band only)

Prayer of the Day

WORD

Reading: Mark 13:1-8

Children's Message

Sermon

Song of the Day: *Open the Eyes of My Heart*

Affirmation of Faith

Prayers

Peace

MEAL

Words of Institution

Lord's Prayer

Invitation to Communion *All are welcome at the Lord's table. Red is wine; white is grape juice.*

Communion Song: *Lord, I Need You*

Communion Blessing

Prayer

SENDING

Announcements

Blessing

Sending Song: *Your Grace Is Enough*

Dismissal

Sending Music

Sunday, November 14

GATHERING

Prelude: Sonata in F Major: *Vivace* (G. P. Telemann)
Gathering Hymn: ***Shall We Gather at the River* (Red #423)**
Confession & Forgiveness
Greeting & Kyrie (Red p. 138)
Prayer of the Day
Welcome & Announcements
Holy Baptism: Finn Jeffrey Espeset (Red p. 227)

WORD

Voluntary: "Now Thank We All Our God" (S. K. Tucker)
First Reading: Psalm 16
Gospel Acclamation (Red p. 142)
Gospel Reading: Mark 13:1-8
Children's Message
Sermon
Hymn of the Day: ***Built on a Rock* (Red #652) vv. 1-3**
Prayers
Peace

MEAL

Offertory: Sonata in F Major: *Largo* (G. P. Telemann)
Offering Prayer
Words of Institution & Lord's Prayer (Red p. 145)
Invitation to Communion *All are welcome at the Lord's table. Red is wine; white is grape juice.*
Lamb of God (Red p. 146)
Table Blessing
Post-Communion Canticle (Red #204)
Prayer

SENDING

Blessing
Sending Hymn: ***Soon and Very Soon* (Red #439)**
Dismissal
Postlude: Sonata in F Major: *Allegro* (G. P. Telemann)



breadfortheworld
HAVE FAITH. END HUNGER.

Bread for the World in November

The November meeting of Story County Bread for the World Team will be **Mon. Nov. 15** from 4:30 to 5:30, in the Crossroads. We are celebrating our participation in helping to get emergency relief to those households most in need during the pandemic. Come to the meeting, learn the details, and see how you can be part of the celebration.



PRAYER AT BETHESDA

GRIEVING: The family of Ramona Esbeck, who died November 4 at Northcrest in Ames

HOLY BAPTISM: Finn Espeset, son of Jackson & Dillan Espeset, Nov. 13;

Sponsors: Nate Espeset, Christian Lundvall

HAPPY BIRTHDAY: Gus Anderson turns 95 on Thursday, Nov. 11

BIRTH DAY: Cameron Rodney Place, born Oct. 8 in Grimes to Nick & Katie Place; Congratulations to them as well as sister, Spencer, and grandparents Rod & Ingrid Place

HEALING: Bob Ahlstrom; Lucille Andersen; Hannah Coney; Cindy Deppe; Sharon Forssman; Pat Frette; Nora Lehti; Denise Meier; Caroline Monnig (daughter of Larry & Nancy Beall); Mike Philpott (brother of Sharon Haugen) surgery in Scottsdale, Arizona; Sabine Troster Pierick; Rod Place; Cooper Schmidt

SERVING OUR NATION: Colonel Mark Kappelmann, (Senior Army Advisor to Iowa National Guard, Camp Dodge, IA), son of Glenn & Mary Kappelmann



Bethesda Survey Opportunity!

The Transforming Church Insight [TCI] is a tool Bethesda is using to gather input from our members and attendees on a variety of topics including: Communications, Outreach, Member Satisfaction, Financial Matters and others. **Please take time between now and November 15**, to take the survey. You can take it online by following the instructions below.

ONLINE INSTRUCTIONS:

Step 1: Log on to the website at: tinyurl.com/sf4rczph

Step 2: Enter your church's Password: **blcia**

Step 3: Answer each question according to the instructions. When you have finished each set of

questions, click "Next" at the bottom of the page. You may use the "Previous" and "Next" buttons to navigate pages and change your answers at any point while you are logged on. When you click "Done" on the last page, your answers will be saved.



November 15

Thank you for participating in this valuable tool for our church! The tabulated results of this survey will help us develop our next 5-year strategic plan by identifying our church's strengths, as well as opportunities for improvement. This survey is administered by Leighton Ford Ministries, a Christian non-profit that specializes in ministry leadership. Each attendee and confirmed member—including our high-schoolers!—is encouraged to complete this important survey.

Do not labor over your decision—your first instinct is usually right. The survey will take you about 20-30 minutes to complete. Your responses will be completely confidential. Thank you in advance for your participation!

CONTACT INFORMATION

- Tony Woodcock, Council President woodcock.ar@gmail.com
- Bryan Simmons, Lead Pastor bsimmons@BethesdaAmes.org
- Ryan Arnold, Associate Pastor rarnold@BethesdaAmes.org
- Emily Notch, Volunteer Coordinator enotch@BethesdaAmes.org
- Lindsay Peters, High School Coordinator lpeters@BethesdaAmes.org
- Mark Kretsinger-Harries, Director of Worship and Music. mkharries@BethesdaAmes.org
- Ed Kaizer, Saturday Night Music Leader kaizerjazz@gmail.com
- Mary Nelson, Lead Organist. mnelson@BethesdaAmes.org
- Julia Lundstrum, Worship Production Coordinator jlundstrum@BethesdaAmes.org
- Lisa Ailshie, Communications Manager lailshie@BethesdaAmes.org
- Lynn Anderson, Administrative Specialist ljanderson@BethesdaAmes.org
- Cliff McDonald, Accounting Manager cmcdonald@BethesdaAmes.org
- Cathy Wright, Bookkeeper cwright@BethesdaAmes.org
- Linda Fevold, Database Coordinator lfevold@BethesdaAmes.org
- Curtis Malone, Assistant Custodian

WORSHIP PARTICIPANTS

Ministers Pastor Bryan Simmons
Saturday Musicians..... Ed Kaizer, Saturday Praise Band
Saturday Host Families..... Lynn & Kim Burnett, Dennis & Marnette Warth
Saturday Worship Production..... Julia Lundstrum, Larry Prince
Sunday Greeters Larry & Nancy Beall, Joanne Frederiksen
Sunday Lector Russ Melby
Communion Assistants..... LuAnn Armstrong, Darlene Schmidt
Sunday Musicians.....Carillon Choir, Mark Kretsinger-Harries, Kathy Slocum
Sunday Worship Production..... Julia Lundstrum, Ava Reason, Logan Simmons
Coffee Fellowship Anne Hogberg

WORSHIP
November 20/21 . . . John 11:32-44
Christ the King



Bethesda Lutheran Church
GATHER...GROW...GO



A congregation of the
Evangelical Lutheran Church in America

We are a proud member of Reconciling in Christ.
Learn more about our inclusivity at: www.reconcilingworks.org/RIC/



Office Hours
Monday–Thursday
9:00 am–4:00 pm

1517 Northwestern Ave. Ames, IA 50010
515-232-6256 **www.BethesdaAmes.org**

Worship Schedule
Saturday . . . 5:30 pm
Sunday . . . 9:30 am